

# Longwatch Video System

## Version 5.0 Overview

The Longwatch Video System Version 5.0 is the only video system specifically designed for the needs of automation applications and operations. Version 5.0 combines a distributed system architecture with video management capability, unparalleled networking flexibility and HMI system integration.

The result is plant-wide video: live, recorded and integrated – delivered to your HMI or combined with your automation data to help you make better decisions faster.

**Saving Time and Money.** Video communicates quickly and efficiently. Longwatch's comprehensive network support enables your operators to be "electronically transported" instantly anywhere in your plant – even into the field, so that actions can be taken quickly and accurately. Longwatch video reduces downtime and time wasted traveling to sites.



**Improving Quality.** Video can help insure that good manufacturing practices are being maintained and that procedures are being followed. Steps in the process that were difficult to monitor and archive can now be captured with video and stored for later review. Longwatch delivers operational confidence for management and consumers.

**Improving Safety and Response.** Water and utility companies rely on Longwatch for remote security and surveillance because Longwatch is the best at integrating video from remote sites. Armed with Longwatch video, first responders know what tools and people to bring when an event occurs – whether it's a security event or an operational event. Video also helps you confirm that remote areas are safe before entering or energizing equipment.

**Documenting Regulatory Compliance.** When you have a spill, how do you document the extent of the problem? How do you document the response and cleanup? Longwatch video can help you comply with regulations, keep agencies accurately informed and mitigate costs and other issues. When you need to show compliance with clean operations, security and safety – video tells the story unambiguously.

**Viewing What Happened.** Longwatch is continuously recording video, and notifying you when events occur or when you want. The result is video that shows you what happened before, during and after the event – to help you save time, money and effort.



## FEATURES

- **Distributed video recording** "at the edge" using standard Windows computers provides scalability and performance.
- The **best networking flexibility** in the industry, including IP and instrumentation network protocols, stretches your investment and operating funds.
  - High speed fiber, cable
  - Satellite, cellular
  - Radio, serial
- **Flexible camera support** enables freedom of camera choice:
  - Analog (NTSC, PAL) cameras
  - Digital (IP) cameras from almost any vendor
  - Pan-Tilt-Zoom servos
- **Easy integration into HMI** and other applications
- **Automatic linking of video** to process management system data using the Longwatch Video Historian™ for enhanced operations analysis, record-keeping and regulatory compliance.
- **Intuitive Longwatch Viewer** user interface brings video results quickly and easily.
- **Centralized System Management** that saves time and effort.
- **Autonomous operation:** video engines continue recording video and responding to events, even while the network is down. No data are lost.
- **Configurable notification.** Deliver video clips to users via e-mail, cell phone or Internet browser.
- **Optional electronic access control** to protect remote facilities, provide video verification of security, and eliminate the costs, risks and overhead of brass keys.

# Longwatch Video System

## Version 5.0 Overview



### PRIMARY COMPONENTS

**Longwatch Video Engine (LVE).** The LVE software is the workhorse of the system. Loaded into a standard Windows XP computer, the LVE communicates with cameras, and I/O hardware to monitor equipment and facilities. The LVE stores the video locally and handles all messaging back to the VCC. The LVE can operate even when the VCC or network are unavailable, so you don't lose any video or data.



**Video Control Center (VCC).** The VCC software creates the central point of configuration for convenient system management.

**Micro Video Engine.** The Micro is a small industrial computer with the LVE software already installed. The Micro has no moving parts, uses only 10 watts of power and can handle harsh environments.



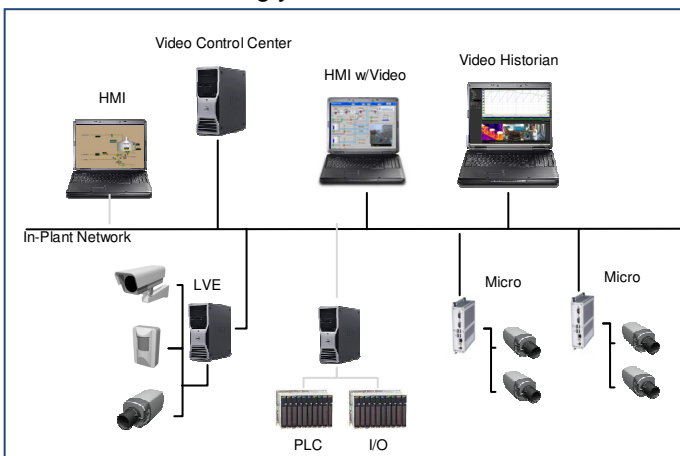
### CAMERAS

Longwatch supports analog and digital cameras. With our IP camera toolkit, you have freedom of selection: using the cameras that best suit your application needs.

Pan-tilt-zoom cameras can be commanded automatically by the LVE, or interactively by the operator through the HMI or Longwatch Viewer.

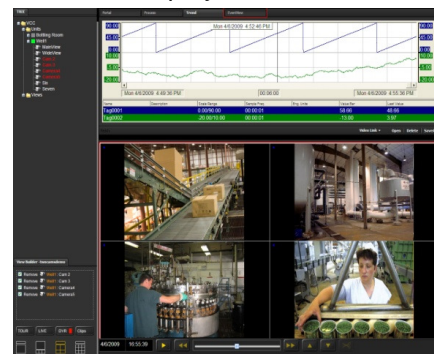
### NETWORKS

Use what you like. Longwatch can use multi-megabit fiber, satellites, cellular, wireless modems, even 9600 baud serial...including your instrumentation network.



### APPLICATION MODULES

**Longwatch Viewer.** This thin-client software displays Longwatch video, alarms and system status information on any Internet Explorer window. Its intuitive design makes it easy to use, delivering Longwatch value as soon as you start it up! The Viewer provides multi-camera video windows (ideal for surveillance applications) and four modes of video display: Live, Tour, DVR, and Clip.



### The Video Historian

The Longwatch Video Historian *automatically* links video with the databases in your control system:

- Data Historian
- Alarm and Event System
- Workflow Tracking
- Batch Tracking

enabling better operations and better documentation because you can see what happened at any point in your operation.

**Access Control.** Ideal for electronic lock control of remote facilities, Longwatch provides video verification as well as lock control, for security and safety.

### About Longwatch

Longwatch was founded by a team of industry veterans with the goal of providing video over a variety of industrial communications networks. Advanced technology incorporated in the system enables automation system operators to utilize video to monitor and verify **activities** within the plant as well as at remote sites using the existing communications infrastructure. Longwatch delivers video for regulatory compliance, operating efficiency and security.

### Longwatch, Inc.

520 Providence Highway Norwood, MA 02062  
+1 781-255-7400 | 877-LONGWATCH  
www.longwatch.com | info@longwatch.com