

# Integrated Video for SCADA

## Local and Remote Video for Safety, Security, Regulatory Compliance



Many industrial facilities and systems have critical assets spread far and wide. Longwatch was designed to deliver surveillance for both local and remote locations, without requiring special networks or placing a large burden on network bandwidth.



Only Longwatch enables users to extend the capabilities of their new or existing networks – saving money, time and support costs.

Remote video surveillance from Longwatch can save you money by reducing false alarms, informing first responders for faster resolution of field problems, and reduce the time and labor involved with field



trips to compressor stations, wells, substations, towers and the like.

Video surveillance can also help deter, detect and prosecute vandals and criminals, helping you bring quality and continuity of service to your customers. The Longwatch Video

System can also help you comply with the growing regulations for NERC/CIP, CFATS, EPA and DHS.

The intuitive and easy-to-use Longwatch Viewer helps users receive value from their system within minutes, and can be viewed anywhere over the Internet for operational flexibility and responsiveness.

Utility, infrastructure and industrial companies rely on Longwatch to help them have better security, safety and productivity. Longwatch video helps you make better decisions faster.



Because Longwatch software is user-configurable and built using industry standards, your cost of ownership is lower, giving you faster payback.



### OVERVIEW

- Proven in water, power, oil & gas and other applications.
- Distributed Digital Video Recorder architecture
  - Robust performance
  - Scalable storage
  - Autonomous operation during network outages. Captures video and events, performs pan-tilt-zoom automatically.
- Event video clips integrated into operator alarm messages. See before, during and after event
  - Triggered by:
    - External devices (contacts, sensors, PLCs)
    - Camera-based video analytics
    - Operator command
- Network Flexibility
  - Fiber or wired high-speed networks
  - Cellular or satellite networks
  - Wireless or instrumentation networks to 9600 baud
  - User-configurable for low overhead
- Camera flexibility
  - Wide number of digital IP cameras supported. Interface toolkit available
  - Analog cameras direct connect with Remote Video Engine
  - Pan-tilt-Zoom
- Integrated with HMI/SCADA Systems
  - Built-in web-based viewer
  - ActiveX controls for embedding video and alarms in existing displays
- Optional applications:
  - Electronic access control
  - Video Historian
  - Console Recorder

# Integrated Video for SCADA

## Local and Remote Video for Safety, Security, Regulatory Compliance



### SYSTEM COMPONENTS

The Longwatch Video System is a group of software modules that provide video management for industrial applications. System components include:

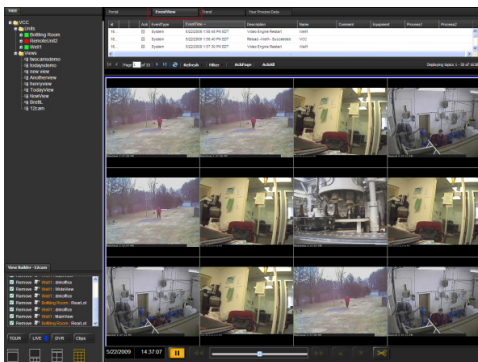
#### Video Control Center (VCC):

The administration and configuration module, the VCC enables on-line system configuration from a centralized location using fill-in-the-blanks menus.

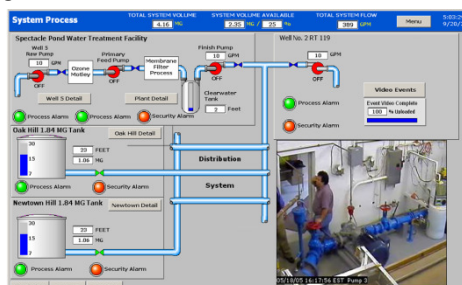


**Longwatch Video Engine (LVE):** The LVE communicates with cameras, performing video collection, event detection and network management. The LVE software can be loaded into a user's Windows computer or supplied pre-loaded in the Longwatch 'Micro' an industrial computer with no moving parts.

**Longwatch Viewer:** This "thin client" application provides a flexible and powerful user interface for viewing Longwatch videos from any computer on the network.



**Longwatch View Modules:** These ActiveX controls can be inserted into any Windows-based HMI display, integrating Longwatch video with operator console graphics.



### OPTIONAL COMPONENTS

The Longwatch System can be expanded for additional applications with the following:

**Longwatch Video Historian:** This powerful application software enables video to be linked automatically with various databases in your SCADA, HMI or DCS system (including alarm databases, data historians, MES and other advanced software.)

**Longwatch Access Control:** When loaded along with the LVE, Access Control provides electronic unlocking and locking of doors using swipe or proximity cards. Video verification of people attempting access can also be provided.

**Longwatch Console Recorder.** This software module, loaded into your HMI, SCADA or DCS console enables Longwatch to record your console display as video. With the Console Recorder, you can review exactly what your system was showing, as well as exactly what the operator was observing, without any tedious or intrusive setup. This powerful tool helps in operator training, troubleshooting, regulatory compliance and liability mitigation.

### About Longwatch

Longwatch was founded by a team of industry veterans with the goal of providing video over a variety of industrial communications networks. Advanced technology incorporated in the system enables automation system operators to utilize video to monitor and verify activities within the plant as well as at remote sites using the existing communications infrastructure. Longwatch delivers video for regulatory compliance, operating efficiency and security.

#### Longwatch, Inc.

520 Providence Highway Norwood, MA 02062  
+1 781-255-7400 | 877-LONGWATCH  
www.longwatch.com | info@longwatch.com